



SC0908 단청빨간색

색변환표 Color Conversion Table

CIEL*a*b*	KS	Munsell HVC
38 / 58 / 28	5R 4/12(dE3.3)	5R 4/12(dE3.9)
sRGB	Adobe RGB	CMYK (US Sheetfed Coated)
174 / 25 / 50	149 / 31 / 52	4 / 100 / 71 / 20
NCS	Pantone (Solid Coated)	Hex Code(Web)
S 2070-R(dE0.7)	187C(dE0.6)	941e34



SCN902 한강은백색

색변환표 Color Conversion Table

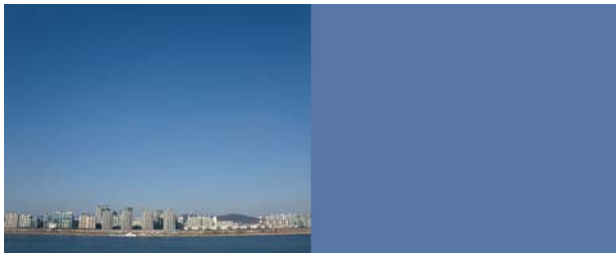
CIEL*a*b*	KS	Munsell HVC
89 / 0 / 1	N8.75(dE0.9)	N9(dE2.3)
sRGB	Adobe RGB	CMYK (US Sheetfed Coated)
224 / 223 / 222	223 / 223 / 221	7 / 5 / 4 / 0
NCS	Pantone (Solid Coated)	Hex Code(Web)
S 1000-N(dE0.1)	7534C(dE3.2)	dfdfdd



SC1956 꽃담황토색

색변환표 Color Conversion Table

CIEL*a*b* 58 / 36 / 61	KS 5YR 6/12(dE3.7)	Munsell HVC 5YR 6/12(dE4.7)
sRGB 209 / 111 / 21	Adobe RGB 187 / 110 / 36	CMYK (US Sheetfed Coated) 0 / 57 / 100 / 9
NCS S 2070-Y40R(dE1.3)	Pantone (Solid Coated) 7413C(dE4.0)	Hex Code(Web) bc6f25



SC7909 서울하늘색

색변환표 Color Conversion Table

CIEL*a*b*	KS	Munsell HVC
56 / -3 / -41	5PB 6/10(dE4.7)	5PB 6/10(dE5.1)
sRGB	Adobe RGB	CMYK (US Sheetfed Coated)
85 / 139 / 207	104 / 138 / 203	63 / 30 / 0 / 0
NCS	Pantone (Solid Coated)	Hex Code(Web)
S 1555-R80B(dE0.3)	297C(dE4.4)	6789ca



SC4907 남산초록색

색변환표 Color Conversion Table

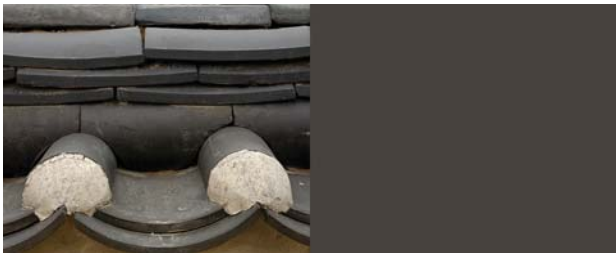
CIEL*a*b*	KS	Munsell HVC
37 / -18 / 2	10G 4/4(dE4.2)	10G 4/4(dE4.6)
sRGB	Adobe RGB	CMYK (US Sheetfed Coated)
52 / 95 / 83	69 / 95 / 84	83 / 40 / 62 / 20
NCS	Pantone (Solid Coated)	Hex Code(Web)
S 6020-B90G(dE0.4)	626C(dE2.2)	455f54



SC0916 고궁갈색

색변환표 Color Conversion Table

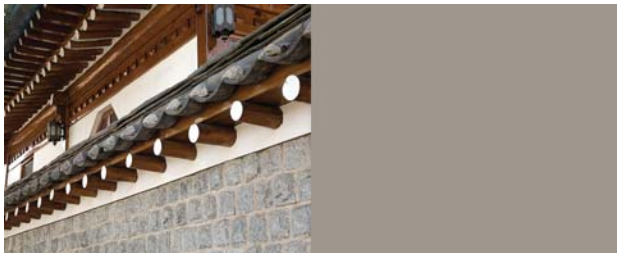
CIEL*a*b*	KS	Munsell HVC
32 / 11 / 7	10R 3/2(dE1.6)	10R 3/2(dE1.2)
sRGB	Adobe RGB	CMYK (US Sheetfed Coated)
95 / 69 / 65	89 / 71 / 67	53 / 66 / 63 / 30
NCS	Pantone (Solid Coated)	Hex Code(Web)
S 7010-Y90R(dE0.4)	411C(dE4.9)	594743



SC2940 기와진회색

색변환표 Color Conversion Table

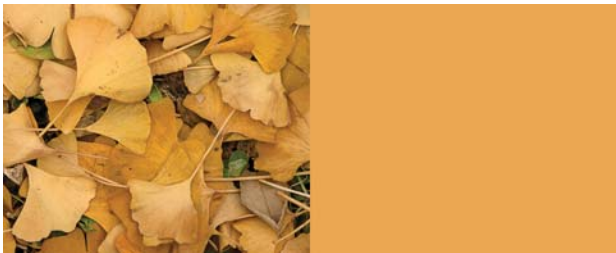
CIEL*a*b*	KS	Munsell HVC
33 / 0 / 4	10Y 3/1(dE3.3)	5Y 3/0.5(dE2.3)
sRGB	Adobe RGB	CMYK (US Sheetfed Coated)
80 / 78 / 72	81 / 79 / 74	65 / 55 / 60 / 28
NCS	Pantone (Solid Coated)	Hex Code(Web)
S 7502-Y(dE0.3)	418C(dE5.1)	504e49



SC2920 돌담회색

색변환표 Color Conversion Table

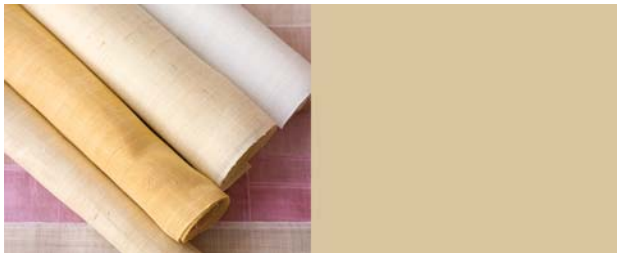
CIEL*a*b*	KS	Munsell HVC
67 / 0 / 5	N6.5(dE3.6)	5Y 7/0.5(dE4.7)
sRGB	Adobe RGB	CMYK (US Sheetfed Coated)
166 / 163 / 154	164 / 161 / 153	29 / 23 / 27 / 0
NCS	Pantone (Solid Coated)	Hex Code(Web)
S 3502-Y(dE0.6)	7536C(dE3.3)	a4a199



SC1944 은행노란색

색변환표 Color Conversion Table

CIEL*a*b*	KS	Munsell HVC
79 / 17 / 55	10YR 8/8(dE2.6)	10YR 8/8(dE3.4)
sRGB	Adobe RGB	CMYK (US Sheetfed Coated)
246 / 182 / 90	229 / 181 / 97	0 / 23 / 67 / 0
NCS	Pantone (Solid Coated)	Hex Code(Web)
S 1050-Y20R(dE0.5)	1365C(dE3.5)	e5b560



SC1941 삼베연미색

색변환표 Color Conversion Table

CIEL*a*b*	KS	Munsell HVC
83 / 2 / 18	2.5Y 8.5/2(dE2.9)	2.5Y 8/2(dE2.2)
sRGB (Web)	Adobe RGB	CMYK (US Sheetfed Coated)
220 / 204 / 172	214 / 203 / 172	8 / 11 / 23 / 0
NCS	Pantone (Solid Coated)	Hex Code(Web)
S 1510-Y20R(dE0.7)	7501C(dE2.3)	d8ccad